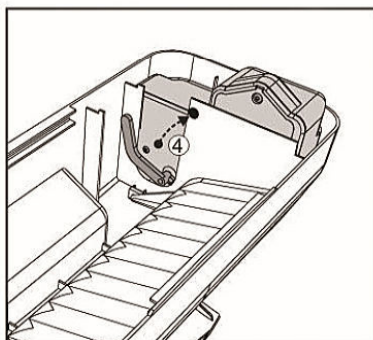
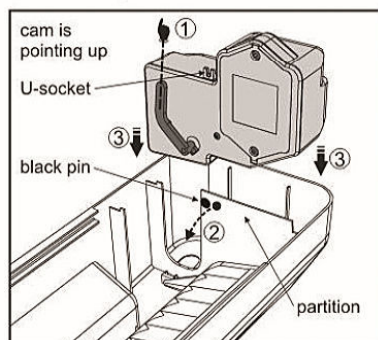




Installation Manual

Installing the Drive Module



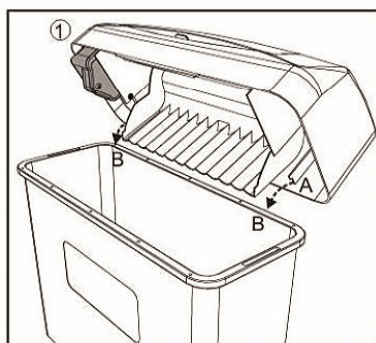
- ① Rotate the cam so that it is pointing up.
- ② Pull back the partition with the black pin to allow the Drive Module to slide in.
- ③ Slide the Drive Module down until the black pin is level with the U-socket.
- ④ Push the black pin into the U-socket to secure the Drive Module.



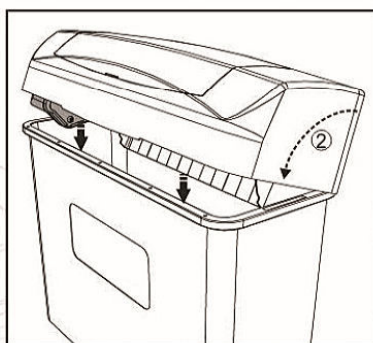
Removing the Drive Module

Follow steps 4&3 above in reverse: Pull out the black pin from the U-socket and hold back the partition while pulling up the Drive Module.

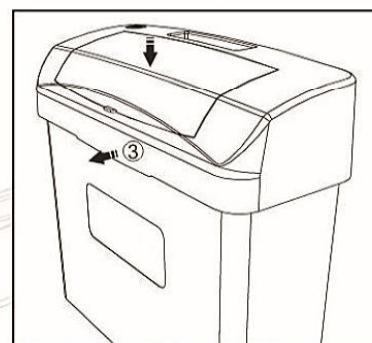
Installing the Cover



- ① Hold the cover at an angle as shown and align the catch 'A' to the bin lip 'B' on both sides



- ② Rotate the lid down until the front edge meets the bin lip.



- ③ Pull out the front face of the cover and push the cover down, then release the front face. This locks the front of the cover to the bin.

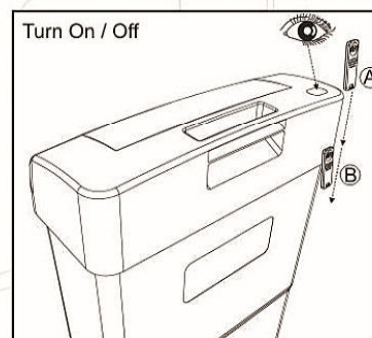
Operating the Bin

The Automatic bin has an On / Off switch operated by magnetic key.
The Drive Module will flash a **green** light when on.
The Drive Module will flash a **red** light when in standby mode.
The Drive module will flash **red & green** when the battery is low and needs replacing.

* To view the light, look at the lens on the top of the cover *

To open the bin lid, turn the unit on and then wave hand over the lens 1-6 inches above.

The lid will open and remain open for 5 seconds before automatically closing.



Hold the key between thumb and fore finger. Face the silver magnet towards the back of the cover, in line with the lens. Slide the key down the back, from top to bottom (from position A to B.)

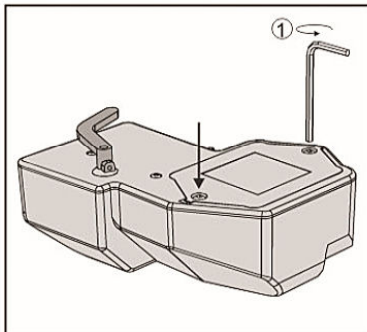
This will turn the Drive Module on or off.

Flashing **green** = on
Flashing **red** = standby mode

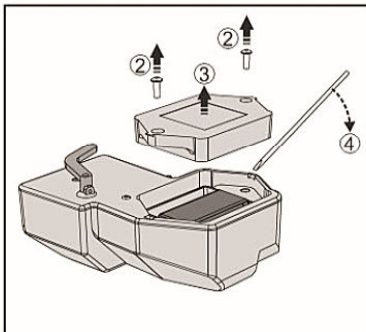


Battery Replacement

Installation Manual



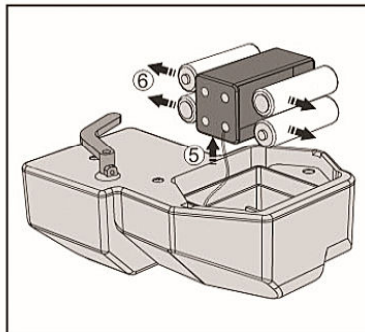
① Unscrew the 2 Allen bolts with a 3mm Allen key.



② Remove the 2 Allen bolts.

③ Lift the battery cover.

④ If the battery cover is tight, use a flat screw driver to lever up either end of the cover.



⑤ Pull out the battery cassette.

⑥ Remove the 4 batteries

⑦ Install 4pcs new alkaline batteries.

⑧ Replace the cassette, the cover and Allen bolts.

Drive Module Specification

- Battery life: 9000 \pm 3% cycles
- Battery type: AA alkaline (4pcs)
- Sensor type: Infra red motion sensor
- Sensing range: 0 - 6 inch
- Interval between sensing: 1 second
- Water resistant

